

CLAYTON PARK - FAIRVIEW SCHOOL
SST DESIGN TEAM UPDATE



Site of new school

AGENDA

- Design Drivers and Guiding Principles
- Sampling of Exterior Finishes
- Interior Palette Sources
- Preliminary Finish Plans
- Interior Views

AGENDA

2026.02.19

CLAYTON PARK FAIRVIEW SCHOOL
SST DESIGN TEAM UPDATE PRESENTATION

DESIGN DRIVERS AND GUIDING PRINCIPLES

Introduction

The proposed Clayton Park Fairview School is a new 130,000-square-foot facility designed to serve students in grades 6 through 9. It will be located on the west side of Radcliffe Drive, north of Raleigh Court and Berkshire Close, in Clayton Park, Halifax, Nova Scotia. The total site area is approximately 5.67 acres. The school is intended to relieve enrollment pressures at the nearby Park West P–9 School and serve as both an exemplary learning environment and a welcoming community hub.

Guiding Principles

A Culture of Collaboration and Transparency

Promote open communication, fairness, and mutual respect throughout the project. Prioritize transparency in decision-making and maintain strong collaboration from design through construction and post-occupancy. Engage all voices, especially students and educators, early and meaningfully to ensure the space reflects their needs and aspirations.



Exterior Render of school entry and cafeteria- finishes to be determined

GUIDING PRINCIPLES

finishes to be determined

2026.02.19

CLAYTON PARK FAIRVIEW SCHOOL
SST DESIGN TEAM UPDATE PRESENTATION

A Community Hub — Inclusive, Local, Lasting

Create a school that feels like a proud, natural extension of its community — welcoming, inclusive, accessible, and reflective of local values, resources, and efforts. It should serve as a central, inspiring place that instills pride in those who design, build, and use it, while standing as a provincial benchmark and lasting legacy.

Learner-Centered, Functional, and Adaptable

Support EECD's Education philosophy. Design adaptable, efficient, and highly functional spaces to support a wide range of teaching approaches, learning styles, and learner well-being. Prioritize intuitive layouts and flexible infrastructure that enhance educational delivery now and into the future.



GUIDING PRINCIPLES

2026.02.19

CLAYTON PARK FAIRVIEW SCHOOL
SST DESIGN TEAM UPDATE PRESENTATION

Sustainable, Durable, and Simple by Design

Design and construct a high-performance, energy-efficient building that is simple to operate and maintain. Balance ambitious energy targets and environmental goals with practical, cost-effective systems designed for long-term durability and flexibility. Prioritize healthy indoor environmental quality, supporting curriculum delivery and learner well-being with fresh air and natural light.

High-Value, Purposeful Investment

Achieve maximum value for the expenditure of provincial funds by making efficient, well-reasoned design decisions that maximize educational value within the project’s budget and timeline. Emphasize life-cycle value, spatial efficiency, and constructibility to ensure long-term impact and educational success.



Exterior Render of courtyard and outdoor space- finishes to be determined

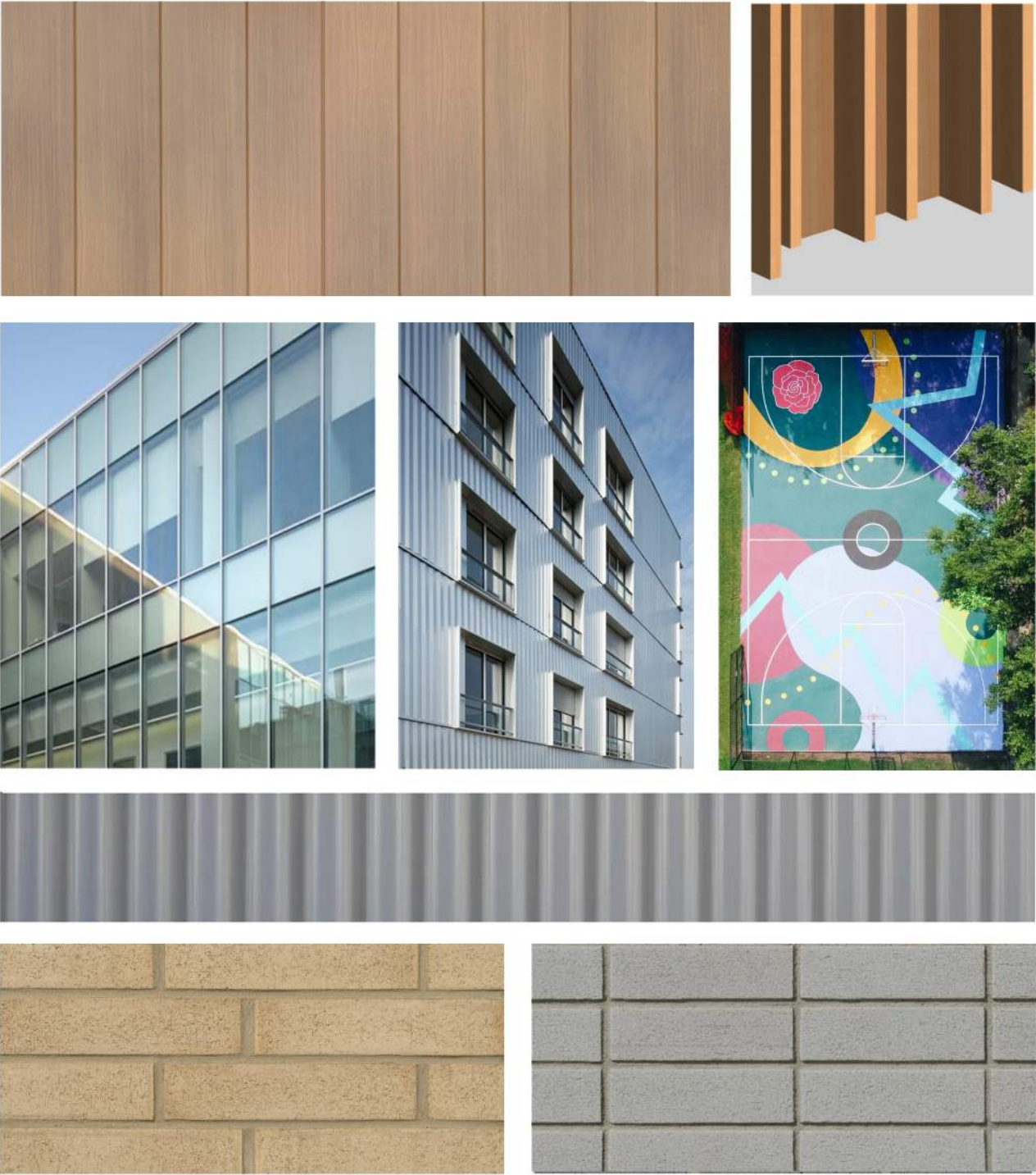
GUIDING PRINCIPLES

finishes to be determined

2026.02.19

CLAYTON PARK FAIRVIEW SCHOOL
SST DESIGN TEAM UPDATE PRESENTATION

SAMPLING OF EXTERIOR FINISHES



finishes to be determined

2026.02.04

CLAYTON PARK FAIRVIEW SCHOOL
INTERIOR FINISHES PRESENTATION

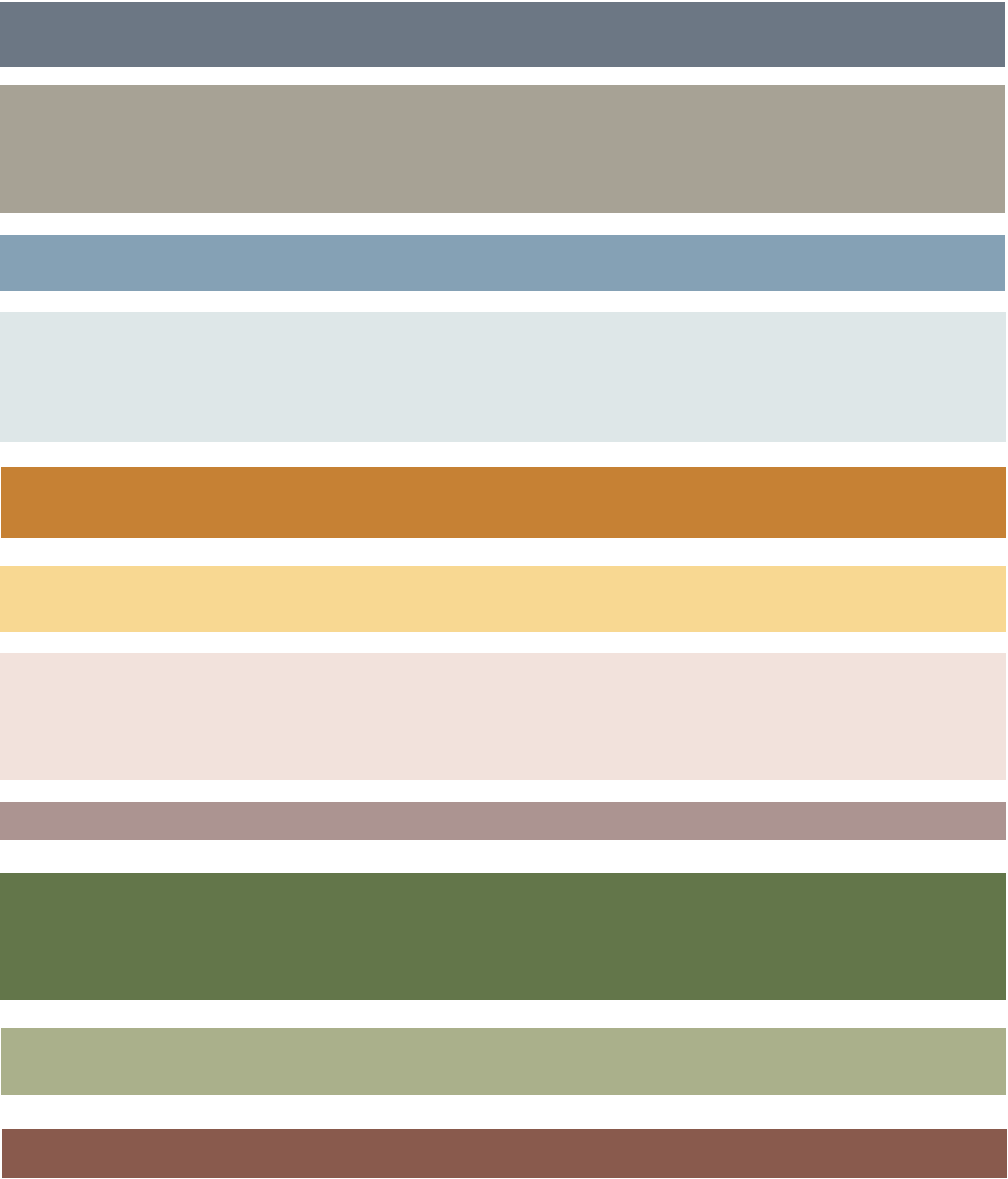
INTERIOR PALETTE SOURCES



INTERIOR PALETTE SOURCES



Tidal Outlet near Delhaven - Kim Aerts



PRELIMINARY FINISH PLANS

INTERIOR PALETTE - PROGRAM IDENTITY + WAYFINDING



GYMNASIUM



LIBRARY + SEMINAR



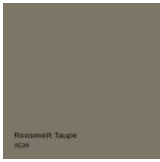
BREAKOUT



CAFETERIA + STAIR RAILINGS



TEACHING WALL



STAFF SPACE



MUSIC



ART



SCIENCE



PRODUCTION + INNOVATION



WC



Tidal Outlet near Delhaven - Kim Aerts

LEVEL 1



FINISH LEGEND

PAINT COLOURS

	GYMNASIUM		MUSIC		DOORS
	LIBRARY + SEMINAR		ART		DOOR FRAMES
	BREAKOUT		SCIENCE		TYPICAL WALLS
	CAFETERIA + STAIR RAILINGS		PRODUCTION + INNOVATION + FAMILY STUDIES		
	TEACHING WALL		WC		
	STAFF SPACE				
	STAGE				

FLOORING COLOURS

	VCT.1 (MAIN FLOORING)
	VCT.2 (ACCENT)
	RSF.1 (STAFF)
	CT.1 (WC)
	CT.2 (STAIRS)
	WOOD SRPUNG FLOOR (GYMNASIUM)
	RESILIENT CARPET (MUSIC AND LIBRARY)

ACCESSORY COLOURS

	RUBBER BASE
	MILLWORK (MAPLE VENEER)
	COUNTER (SOLID SURFACE)
	COUNTER (PLAM)
	LOCKERS
	GYM MATS

GRAPHICS LEGEND

	DASHED LINE - CEILING COLOUR
	SOLID LINE - ACCENT WALL
	SOLID - FLOOR COLOUR

finishes to be determined

2026.02.19

CLAYTON PARK FAIRVIEW SCHOOL
SST DESIGN TEAM UPDATE PRESENTATION

LEVEL 2



FINISH LEGEND

PAINT COLOURS

	GYMNASIUM		MUSIC		DOORS
	LIBRARY + SEMINAR		ART		DOOR FRAMES
	BREAKOUT		SCIENCE		TYPICAL WALLS
	CAFETERIA + STAIR RAILINGS		PRODUCTION + INNOVATION + FAMILY STUDIES		
	TEACHING WALL		WC		
	STAFF SPACE				
	STAGE				

FLOORING COLOURS

	VCT.1 (MAIN FLOORING)
	VCT.2 (ACCENT)
	RSF.1 (STAFF)
	CT.1 (WC)
	CT.2 (STAIRS)
	WOOD SRPUNG FLOOR (GYMNASIUM)
	RESILIENT CARPET (MUSIC AND LIBRARY)

ACCESSORY COLOURS

	RUBBER BASE
	MILLWORK (MAPLE VENEER)
	COUNTER (SOLID SURFACE)
	COUNTER (PLAM)
	LOCKERS
	GYM MATS

GRAPHICS LEGEND

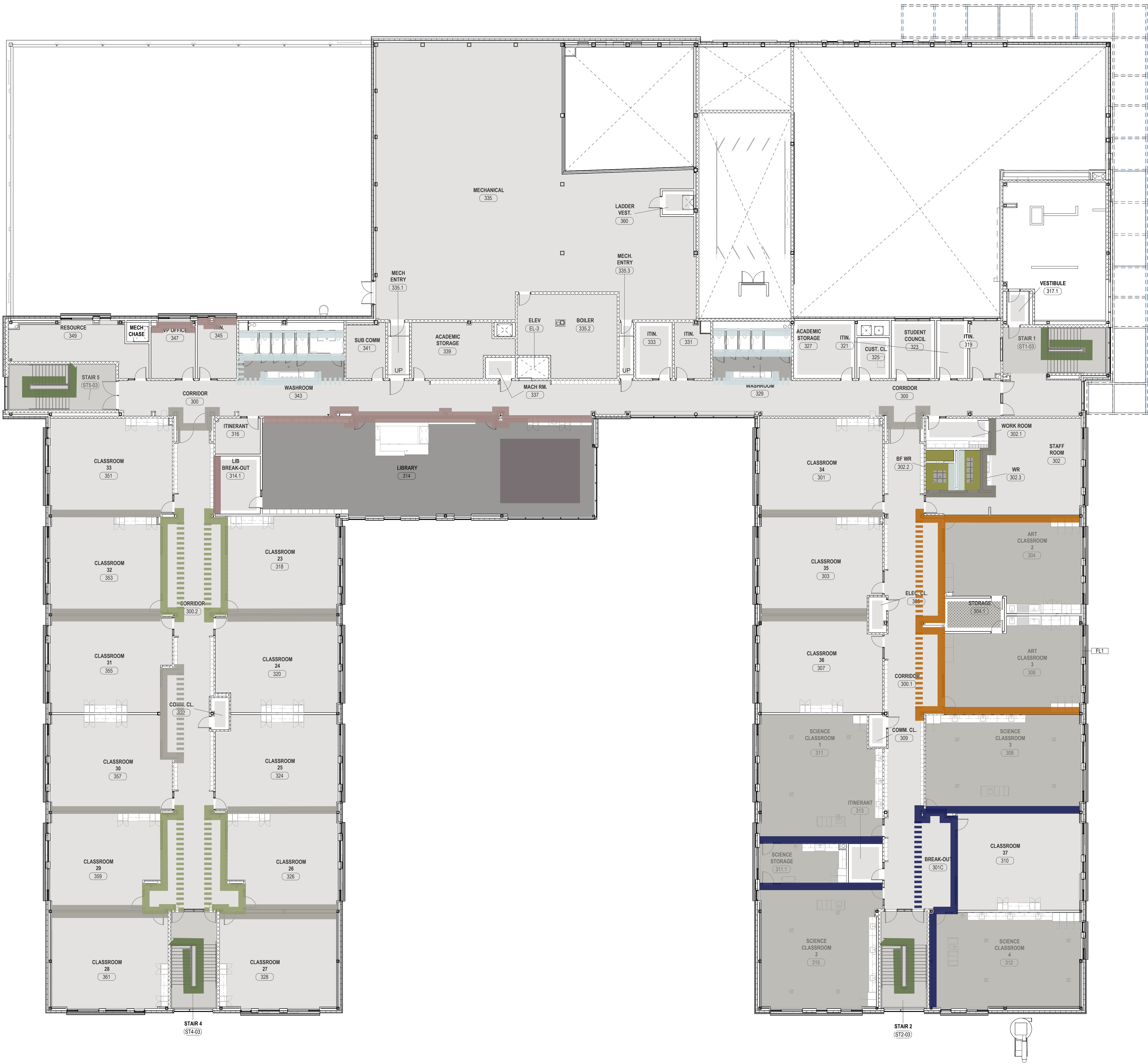
	DASHED LINE - CEILING COLOUR
	SOLID LINE - ACCENT WALL
	SOLID - FLOOR COLOUR

finishes to be determined

2026.02.19

CLAYTON PARK FAIRVIEW SCHOOL
SST DESIGN TEAM UPDATE PRESENTATION

LEVEL 3



FINISH LEGEND

PAINT COLOURS

	GYMNASIUM		MUSIC		DOORS
	LIBRARY + SEMINAR		ART		DOOR FRAMES
	BREAKOUT		SCIENCE		TYPICAL WALLS
	CAFETERIA + STAIR RAILINGS		PRODUCTION + INNOVATION + FAMILY STUDIES		
	TEACHING WALL		WC		
	STAFF SPACE				
	STAGE				

FLOORING COLOURS

	VCT.1 (MAIN FLOORING)
	VCT.2 (ACCENT)
	RSF.1 (STAFF)
	CT.1 (WC)
	CT.2 (STAIRS)
	WOOD SRPUNG FLOOR (GYMNASIUM)
	RESILIENT CARPET (MUSIC AND LIBRARY)

ACCESSORY COLOURS

	RUBBER BASE
	MILLWORK (MAPLE VENEER)
	COUNTER (SOLID SURFACE)
	COUNTER (PLAM)
	LOCKERS
	GYM MATS

GRAPHICS LEGEND

	DASHED LINE - CEILING COLOUR
	SOLID LINE - ACCENT WALL
	SOLID - FLOOR COLOUR

finishes to be determined

2026.02.19

CLAYTON PARK FAIRVIEW SCHOOL
SST DESIGN TEAM UPDATE PRESENTATION

SCHOOL INTERIORS



LYDON LYNCH CS&P Architects
ARCHITECTS

MAIN SCHOOL ENTRANCE

finishes to be determined

2026.02.19

CLAYTON PARK FAIRVIEW SCHOOL
SST DESIGN TEAM UPDATE PRESENTATION



ADMINISTRATION AND ENTRY LOBBY

finishes to be determined

2026.02.19

CLAYTON PARK FAIRVIEW SCHOOL
SST DESIGN TEAM UPDATE PRESENTATION



CANOPY OF TREES



MAPLE ACOUSTICS AND PROSCENIUM



WARM BRICK SERVERY SURROUND

CAFETERIA DEVELOPMENT - SERVERY VIEW

finishes to be determined

2026.02.19

CLAYTON PARK FAIRVIEW SCHOOL

SST DESIGN TEAM UPDATE PRESENTATION



CAFETERIA DEVELOPMENT - VIEW TO STAGE

finishes to be determined

2026.02.19

CLAYTON PARK FAIRVIEW SCHOOL
SST DESIGN TEAM UPDATE PRESENTATION



OPEN STAIR FROM LEVEL 2 - VIEW TO COURTYARD

finishes to be determined

2026.02.19

CLAYTON PARK FAIRVIEW SCHOOL
SST DESIGN TEAM UPDATE PRESENTATION



LEAFY PATTERN OF ACOUSTIC PANELS



WOOD BENCH TOPS



SOFTEN METAL WITH POPS OF COLOUR

OPEN STAIR TO LEVEL 1

finishes to be determined

2026.02.19

CLAYTON PARK FAIRVIEW SCHOOL
SST DESIGN TEAM UPDATE PRESENTATION



WASHROOM AND GYM ENTRY

finishes to be determined

2026.02.19

CLAYTON PARK FAIRVIEW SCHOOL
SST DESIGN TEAM UPDATE PRESENTATION



DOUBLE GYMNASIUM VIEW

finishes to be determined

2026.02.19

CLAYTON PARK FAIRVIEW SCHOOL
SST DESIGN TEAM UPDATE PRESENTATION



LYDON LYNCH | **CS&P Architects**
ARCHITECTS

LOGO - OPTION 1

LOGO - OPTION 2

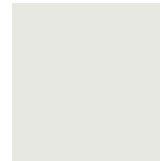
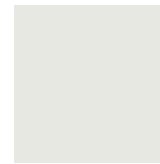
LOGO - OPTION 3
(relocate acoustic block
and steel bracing)

GYMNASIUM 3 (single)

WALLS &
CEILING

ACOUSTIC
WALL
PANELS

WALL
PADDING

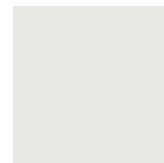
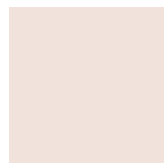


GYMNASIUM 1 + 2 (double)

DECK, STRUCTURE
AND EQUIPMENT

WALLS &
CURTAIN

WALL
PADDING



GYMNASIA AXONOMETRIC VIEW + LOGO PLACEMENT OPTIONS

finishes to be determined

2026.02.19

CLAYTON PARK FAIRVIEW SCHOOL
SST DESIGN TEAM UPDATE PRESENTATION



CLASSROOM CORRIDOR

finishes to be determined

2026.02.19

CLAYTON PARK FAIRVIEW SCHOOL
SST DESIGN TEAM UPDATE PRESENTATION



ARTS WING AND BREAK-OUT SPACE

finishes to be determined

2026.02.19

CLAYTON PARK FAIRVIEW SCHOOL
SST DESIGN TEAM UPDATE PRESENTATION



LYDON LYNCH
ARCHITECTS

CS&P Architects



SCIENCE WING AND BREAK-OUT SPACE

finishes to be determined

2026.02.19

CLAYTON PARK FAIRVIEW SCHOOL
SST DESIGN TEAM UPDATE PRESENTATION



MUSIC CLASSROOM

finishes to be determined

2026.02.19

CLAYTON PARK FAIRVIEW SCHOOL
SST DESIGN TEAM UPDATE PRESENTATION

